

Pro-Lift®



2009/2010

Jack features:

- Pro-Lift® Hydraulic Garage Jacks meet or exceed TÜV/GS standards.
- Heavy-duty reinforced steel construction provides long term durability.
- Patented bypass system provides over-pumping protection.
- Built-in safety valve provides overload protection.
- Wide stance frame for better stability.
- Twist gear release mechanism.
- Swivel saddle and swivel rear casters provide easy positioning and safety.

G415
Capacity: 1.2 Ton
Lifting Range:
 89-375mm
LxWxH:
 587x280x145mm

Aluminium Jack



**14
KG**




Carton
N.W.: 13.5Kg
G.W.: 15.8Kg
Size: 635x310x170mm



G489
Capacity: 2.25 Ton
Lifting Range:
 140-495mm
LxWxH:
 644x335x165mm



**30
KG**




Carton
N.W.: 30.2Kg
G.W.: 31.5Kg
Size: 690x375x210mm



G582
Capacity: 2 Ton
Lifting Range:
 108-413mm
LxWxH:
 592x322x157mm



**25
KG**

High Performance




Carton
N.W.: 25.1Kg
G.W.: 27.3Kg
Size: 625x360x205mm

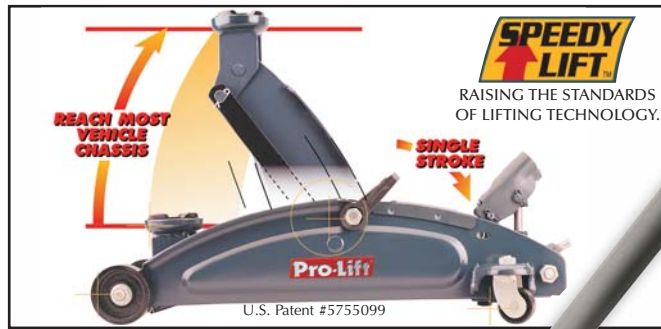


FLOOR JACKS



Speedy Lift™ Technology.

A single stroke raises the jack saddle from resting position to vehicle chassis.



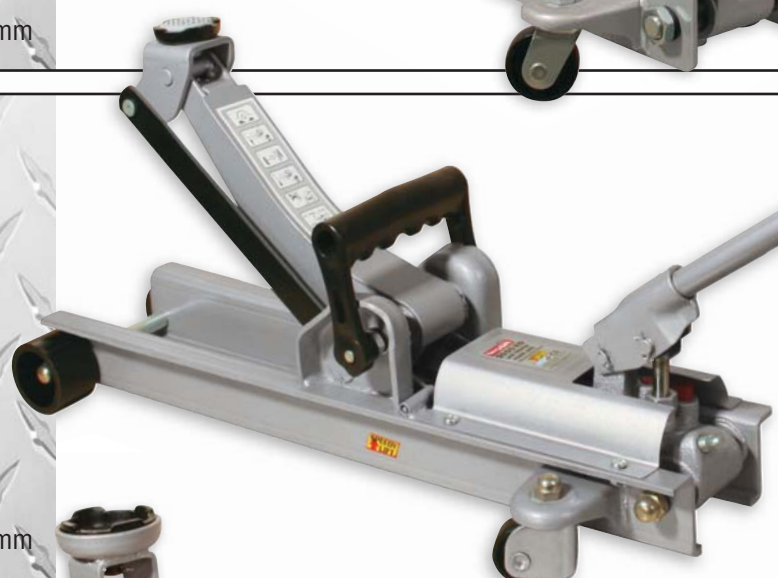
F521 SUV Model
Capacity: 2.25 Ton
Lifting Range:
 150-533mm
LxWxH:
 719x249x150mm

Carton
N.W.: 19.4Kg
G.W.: 21Kg
Size: 740x280x175mm



F777 Low Profile
Capacity: 2 Ton
Lifting Range:
 89-356mm
LxWxH:
 600x219x147mm

Carton
N.W.: 16.1Kg
G.W.: 17.5Kg
Size: 630x255x180mm



F395M or F395M B/C
 Same in Blow Mold Case
Capacity: 2 Ton
Lifting Range:
 140-356mm
LxWxH:
 504x201x140mm

Carton
N.W.: 9.7Kg
G.W.: 11Kg
Size: 525x220x155mm



JACKS STANDS

Jack Stands features:

- High quality cast ductile iron ratchet bar.
- Height adjustment mechanism allows smooth upward movement while release handle locks into position.
- Ideal for auto, truck service, farm, and shop use.
- Meets or exceeds ANSI/PALD standards.
- Sturdy stamped steel construction.

T-9621
Capacity: 2.25 Ton
Lifting Range: 340-543mm
LxWxH: 215x170x340mm

Carton
N.W.: 7.8Kg
G.W.: 8.8Kg
Size: 305x245x320mm

Jack Stands - Ratchet Extra High

T-9360
Capacity: 2.8 Ton
Lifting Range: 284-458mm
LxWxH: 208x180x284mm

Carton
N.W.: 6.6Kg
G.W.: 7.4Kg
Size: 318x230x280mm

Jack Stands - Ratchet

T-9802A
Capacity: 2 Ton
Lifting Range: 280-380mm
LxWxH: 214x193x280mm

Carton
N.W.: 10.5Kg
G.W.: 12Kg
Size: 540x235x380mm

Jack Stands

T-9102
Capacity: 2 Ton
Lifting Range: 249-369mm
LxWxH: 250x250x249mm

Carton
N.W.: 21.4Kg
G.W.: 22.8Kg
Size: 514x200x295mm

T-9103
Capacity: 3 Ton
Lifting Range: 290-440mm
LxWxH: 310x310x290mm

Carton
N.W.: 31.3Kg
G.W.: 33.7Kg
Size: 460x336x360mm

Jack Stands Foldable

Bottle Jacks features:

- Steel lifting saddle cleated for load gripping power.
- Extension screw adjusts to accommodate work height.
- Patented bypass device protects against over-pumping.
- Heat treated critical stress areas ensure long life performance.
- Carrying handle for 8, 12 & 20ton models.
- Meets or exceeds ANSI/PALD standards.
- Ideal for auto, truck service, farm and shop use.

B02AS
Capacity: 2 Ton
Lifting Range: 183-348 mm
LxWxH: 95x95x183mm
N.W.: 2.9Kg



Carton = 6pcs
G.W.: 18.3Kg
Size: 340x230x220mm

B04AS
Capacity: 4 Ton
Lifting Range: 204-391 mm
LxWxH: 107x99x204mm
N.W.: 4Kg



Carton = 6pcs
G.W.: 25.3Kg
Size: 410x250x250mm

B06AS
Capacity: 6 Ton
Lifting Range: 219-427mm
LxWxH: 115x102x219mm
N.W.: 5.2Kg



Carton = 4pcs
G.W.: 21.8Kg
Size: 270x240x273mm

B08AS
Capacity: 8 Ton
Lifting Range: 228-450 mm
LxWxH: 121x120x228mm
N.W.: 5.9Kg



Carton = 4pcs
G.W.: 24.9Kg
Size: 293x293x290mm

B12AS
Capacity: 12 Ton
Lifting Range: 240-473 mm
LxWxH: 134x130x240mm
N.W.: 8Kg



Carton = 4pcs
G.W.: 33.5Kg
Size: 320x315x290mm

B20AS
Capacity: 20 Ton
Lifting Range: 242-475 mm
LxWxH: 159x150x242mm
N.W.: 12.3Kg



Carton = 2pcs
G.W.: 26.1Kg
Size: 351x192x270mm

Pro-Lift

ENGINE CRANE & PIT JACK



C1000
Capacity:
1000 Kg

Lifting Range:
Min.: 195 mm
Max.: 1885 mm

Product Size Folded:
440x412x1423mm

Carton
N.W.: 71.8 Kg
G.W.: 76.0 Kg
Size:
1430x460x345mm

Foldable
Engine Crane

Engine Crane features:

- Polished ram plunger and cylinder protecting seals from abrasion.
- Built-in safety valve ensuring operating safety against overloading.
- Foldable model, with retractable front legs and lifting boom for easy storage.
- Heavy duty welded construction with rugged reinforced tubular steel.

Pit Jack features:

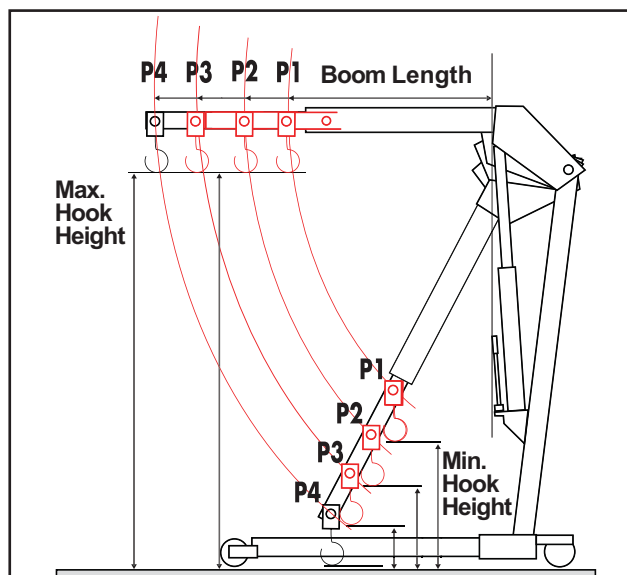
- Chrome-plated ram for telescopic extension allows easy positioning contact of hard-to-reach lift points.
- Swivel casters and foot pedal for easy positioning in tight areas.



P0200
Capacity: 200 Kg
Lifting Range:
1302-2212 mm
LxWxH:
370x385x1302mm

Carton
N.W.: 24 Kg
G.W.: 28.1 Kg
Size:
210x215x1130mm

Pit Jack



| Model | Lock Position of Extension Boom | Capacity (KG) | Minimum Hook Height (mm) | Maximum Hook Height (mm) | Boom Length (mm) | N.W. (KG) | G.W. (KG) |
|-------|---------------------------------|---------------|--------------------------|--------------------------|------------------|-----------|-----------|
| C1000 | P1 | 1000 | 430 | 1755 | 855 | 71.8 | 76.0 |
| | P2 | 800 | 350 | 1800 | 935 | | |
| | P3 | 600 | 270 | 1845 | 1015 | | |
| | P4 | 400 | 195 | 1885 | 1095 | | |

Dealer Info:



SHINN FU EUROPE B.V.
Roosendaal - The Netherlands

Tel.: +31 165 583300
Fax: +31 165 583310

E-mail: sales@sfeu.nl
Website: www.shinnfu.com